



14, 353 Uxbridge Road, London, W3 9RH

A spacious one bedroom apartment at over 540 sq ft that offers well appointed rooms, large stylish windows, a separate kitchen and private patio.

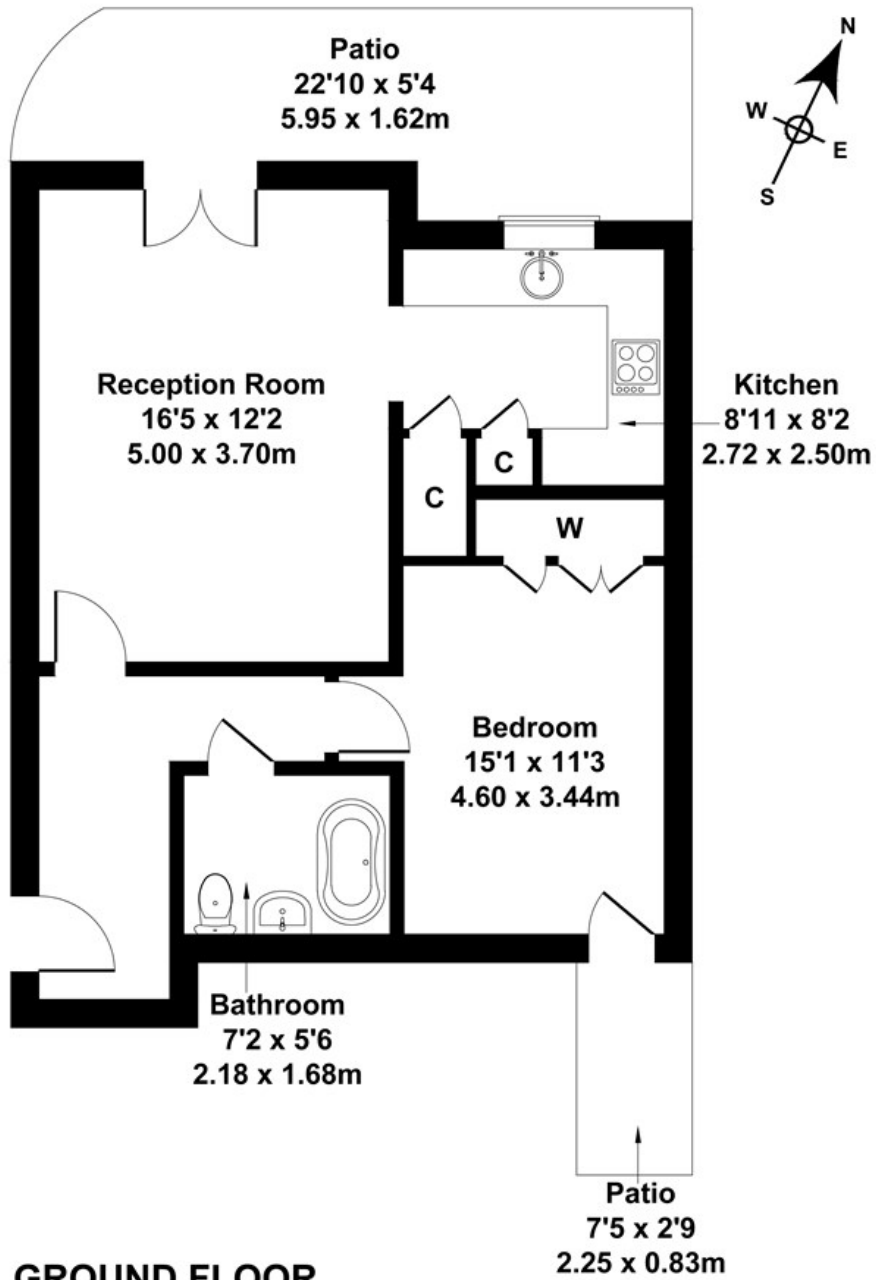
- Large One Bedroom
- Ground Floor Apartment
- Spacious Reception Room
- Purpose Built
- Great Transport Links
- No Chain
- Long Lease - 135 Years
- Private Patio
- Bike Storage
- Communal South Facing Gardens

£350,000

Uxbridge Road

Approximate Gross Internal Area

54.1 Sq M / 582 Sq Ft



GROUND FLOOR

Not to Scale. Produced by The Plan Portal 2022
For Illustrative Purposes Only.

Energy Efficiency Rating		Current	Potential
Very energy efficient - lower running costs			
(92 plus) A			
(81-91) B			81
(69-80) C		64	
(55-68) D			
(39-54) E			
(21-38) F			
(1-20) G			
Not energy efficient - higher running costs			
England & Wales	EU Directive 2002/91/EC		